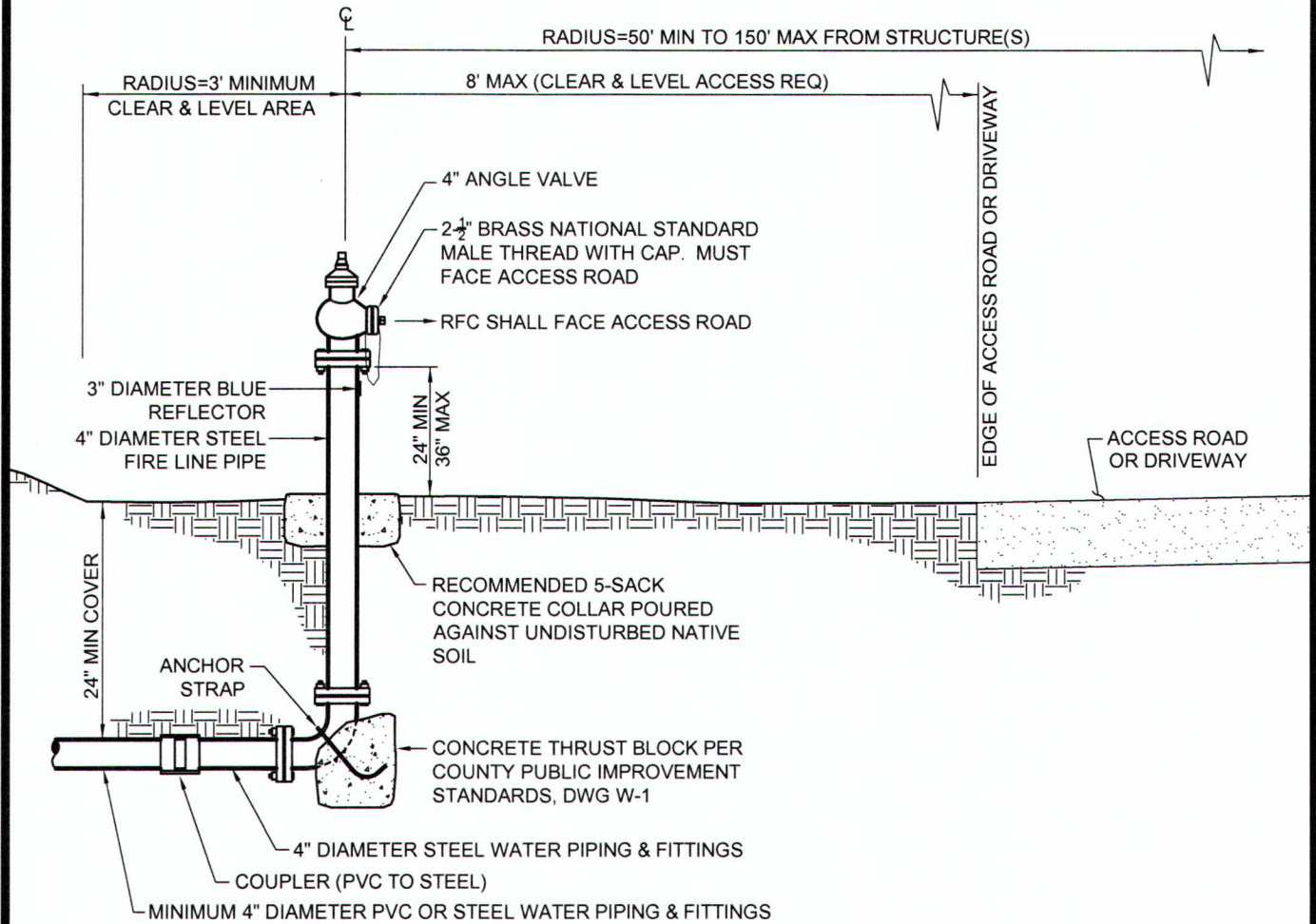


SEE COUNTY PUBLIC IMPROVEMENT  
STANDARD DWG W-2 FOR  
COMMERCIAL FIRE HYDRANTS



NOTES:

1. RESIDENTIAL FIRE CONNECTION (RFC) MUST BE INSTALLED AND FULLY FUNCTIONAL PRIOR TO AND DURING CONSTRUCTION.
2. RFC MUST BE INSTALLED WITHIN 8-FEET OF THE EDGE OF ACCESS ROAD OR DRIVEWAY AND THE AREA BETWEEN MUST BE LEVEL AND CLEAR OF ALL OBSTACLES.
3. THE RFC OUTLET MUST BE 24-INCHES ABOVE FINISHED GRADE.
4. THE RFC MUST BE EQUIPPED WITH EITHER A BRASS OR PLASTIC CAP.
5. THE RFC MUST BE LOCATED BETWEEN 50-FEET AND 150-FEET FROM ALL STRUCTURES.
6. A 3-FOOT MINIMUM CLEAR AND LEVEL ZONE MUST BE PROVIDED ALL AROUND THE CENTER OF THE RFC.
7. A 3-INCH BLUE REFLECTOR MEETING CAL FIRE REQUIREMENTS MUST BE PROVIDED.
8. A 10' CLEAR ZONE PER DWG FP-6 MUST BE MAINTAINED AROUND RFC FOR CAL FIRE ACCESS.
9. COMMERCIAL HYDRANTS MUST COMPLY WITH COUNTY PUBLIC IMPROVEMENT STANDARDS, DWG W-2.



COUNTY OF SAN LUIS OBISPO FIRE DEPARTMENT / CAL FIRE  
**RESIDENTIAL FIRE CONNECTION**  
(RFC)

Adopted: Aug. 2014	Scale: NTS
Revised: Apr. 2017	Revision No.: 1
Drawing No.:	<b>FP-3</b>